



**Institutional Presentation
2Q17**

SulAmérica at a Glance

Solid business model with proven track record



SulAmérica – Highlights

Key figures



Financial highlights



Revenues **R\$16.8 billion**



Total assets **R\$21.8 billion**



Shareholders' equity **R\$5.0 billion**

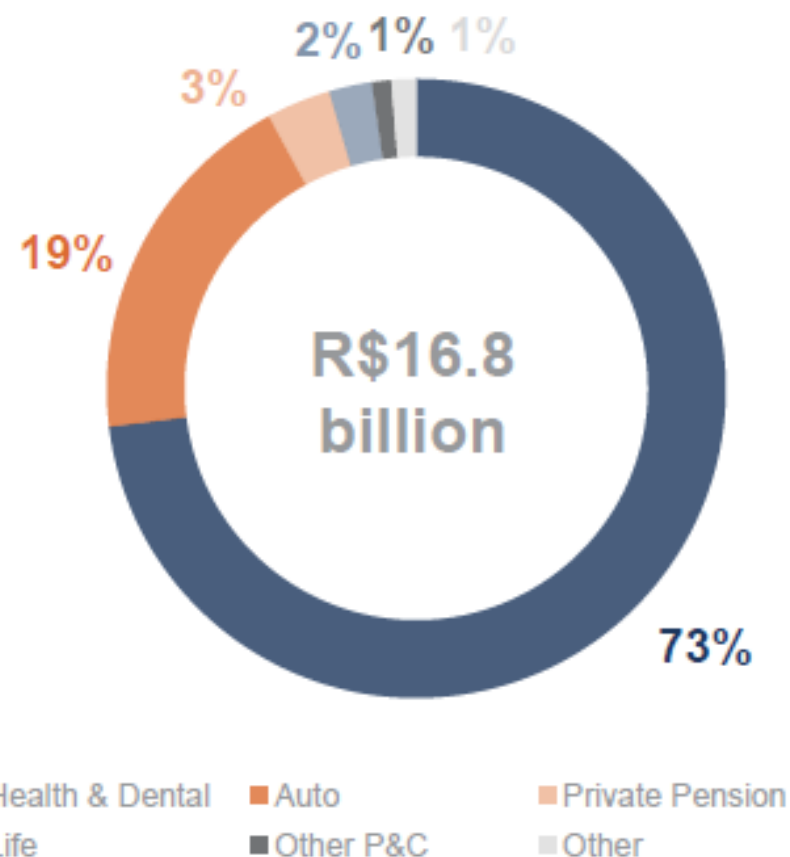


Net income **R\$695 million**



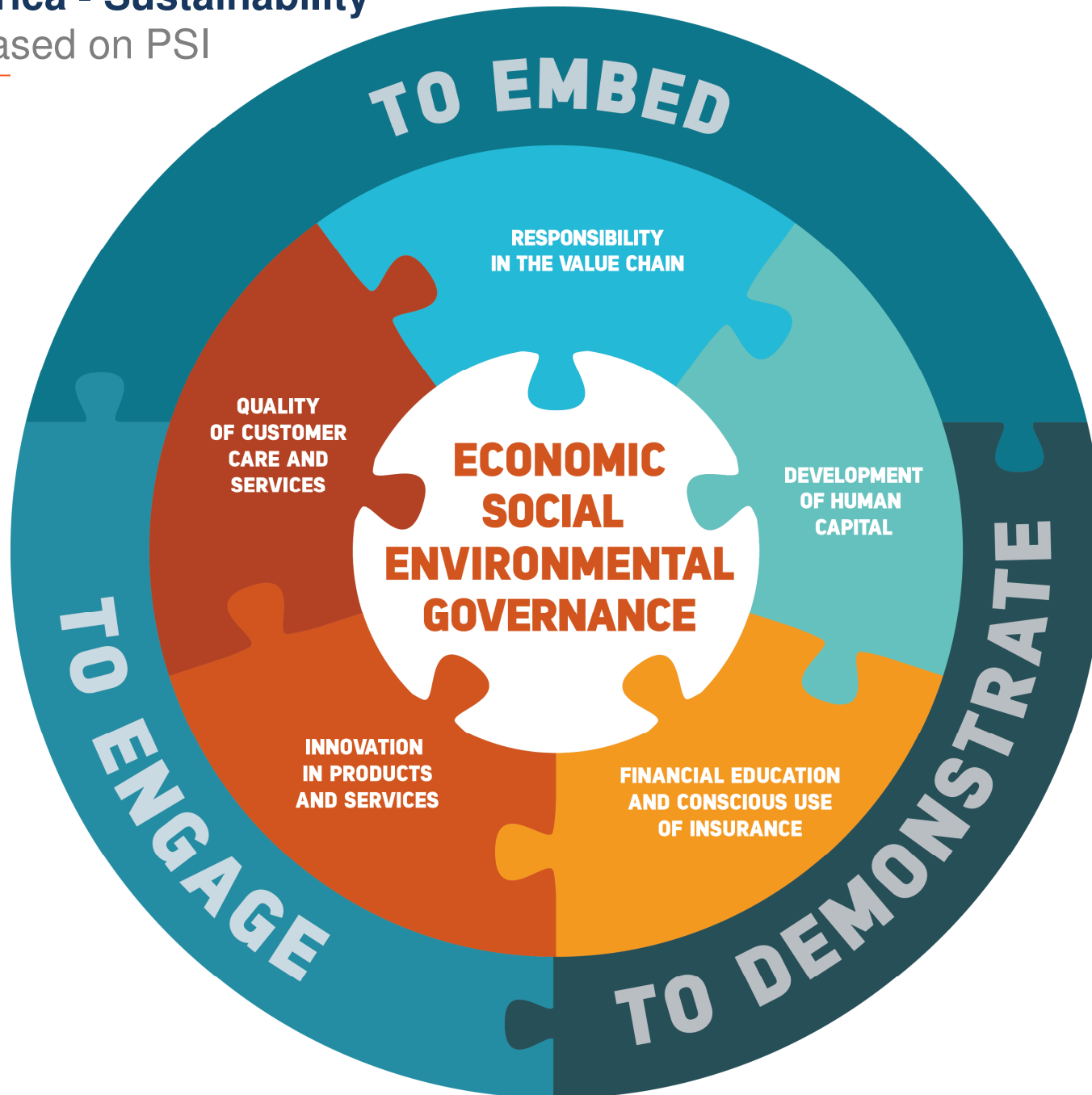
Return on average equity **14.7%**

Revenue breakdown



SulAmérica - Sustainability

Matrix based on PSI



Gracias

Patricia Coimbra

SulAmérica

HR & Sustainability

Patricia.coimbra@sulamerica.com.br

sustentabilidade@sulamerica.com.br

www.sulamerica.com.br

